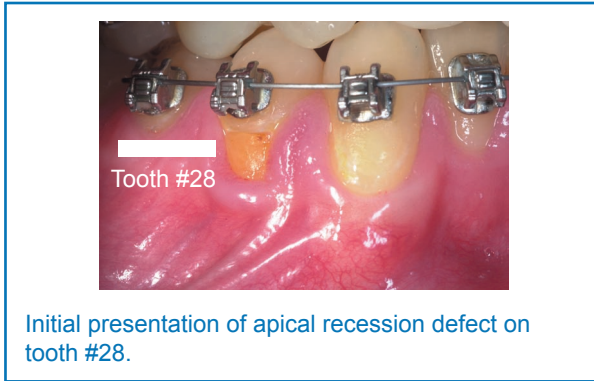
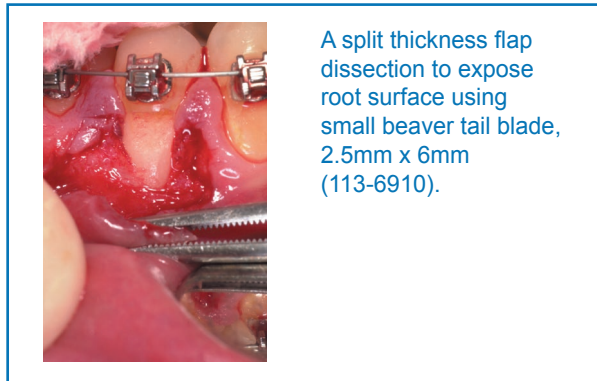


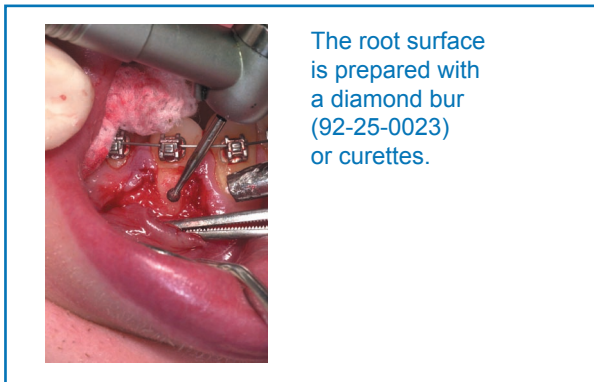
Step 1



Step 2



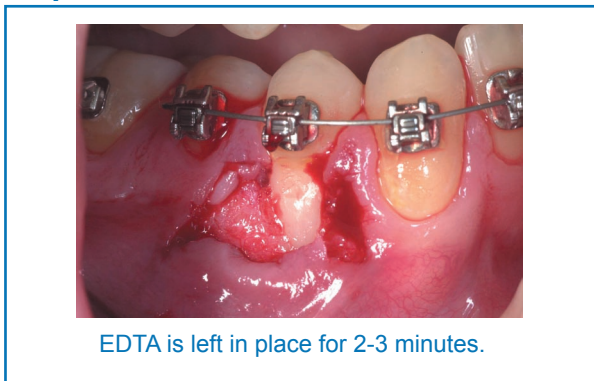
Step 3



Step 4



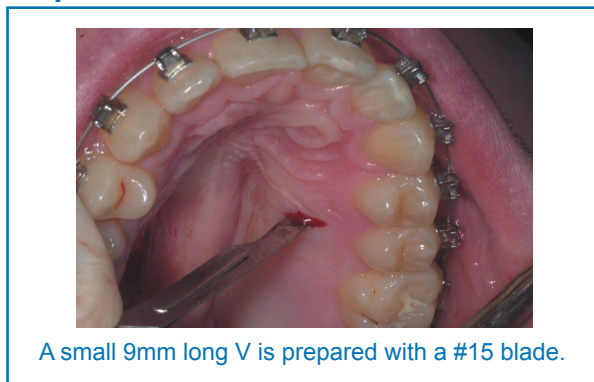
Step 5



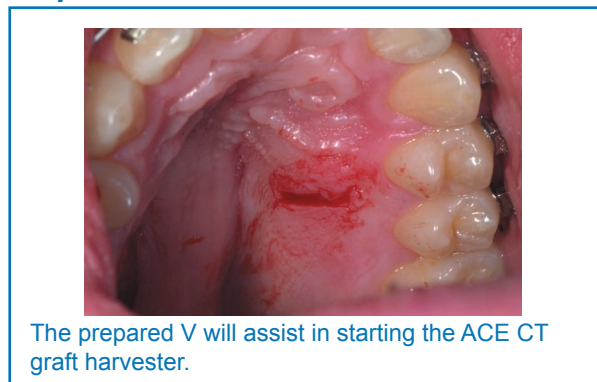
Step 6



Step 7



Step 8

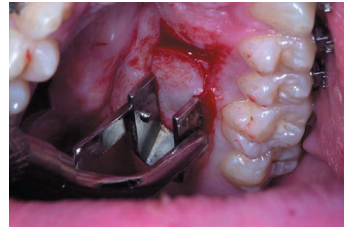


Step 9



Vaseline is placed upon the leading edge of the horseshoe to assist in advancing the ACE CT graft harvester.

Step 10



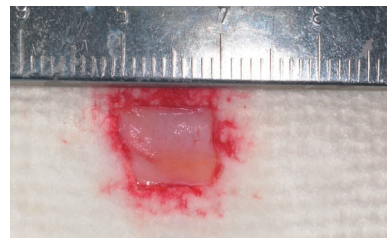
The leading edge of the ACE CT graft harvester blades are placed into the V and it is advanced toward the posterior. The distance advanced should be equal to the amount of tissue needed to treat the recession defect.

Step 11



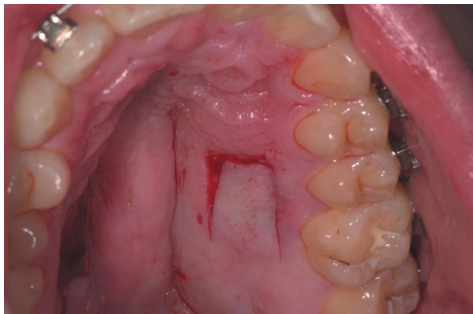
The pedicle epithelial containing layer can be seen as well as the connective tissue layer which is harvested with a #15 blade after harvester removal.

Step 12



The harvested piece of connective tissue has a consistent 1.5mm thickness and a 9mm width. The length is controlled by the ACE CT graft harvester advance and is 10mm for this example.

Step 13



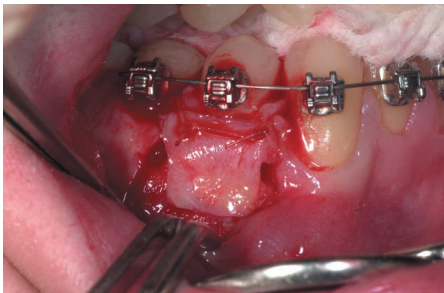
The epithelium containing pedicle flap is replaced.

Step 14



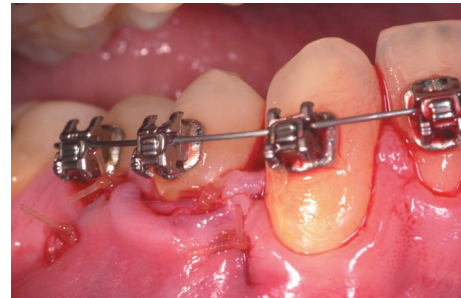
PeriAcryl™ (157-4000) is used to fixate the pedicle flap.

Step 15

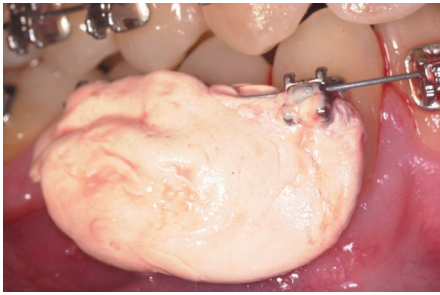


The connective tissue graft is sutured in place with gut suture.

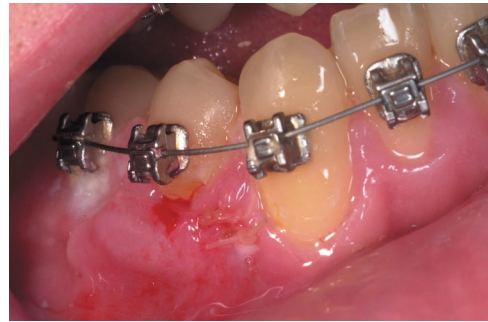
Step 16



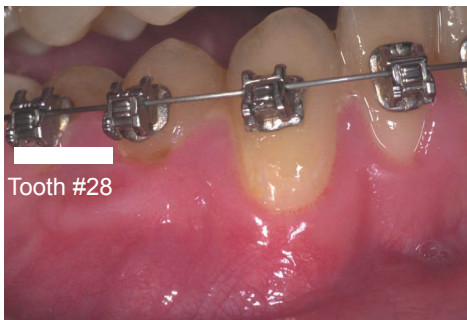
The flap is coronally positioned with gut suture and PeriAcryl™.

Step 17

A periodontal pack (COE-PAK™, ACE item number 218-2558) is then placed to protect the graft site.

Step 18

One week healing.

Step 19

Two week healing showing complete root coverage.

Step 20

Two week palatal healing showing complete healing.

**USA / ACE Surgical Supply Company, Inc.**

Fax: 800-583-3150 • 508-583-3140 • Tel: 800-441-3100 • 508-588-3100
1034 Pearl Street • P.O. Box 1710, Brockton • MA 02303
Email: info@acesurgical.com • www.acesurgical.com

EUROPE / ACEuropa Lda.

Fax: 351-21-351-2169 • Tel: 351-21-351-2160
Av. da Liberdade, 227-2 • 1250-142 Lisboa • Portugal
Email: aceuropa@ip.pt • www.aceuropa.com

CANADA / Surgical Science Systems

Fax: 877-668-0999 • 905-731-5428 • Tel: 877-668-0888 • 416-410-8795
621 York Hill Boulevard • Thornhill, Ontario L4J 5L3
Email: surgsci@sympatico.ca

